

# The drugs recognition poster

## Cannabis

### CLASS B

Cannabis can be smoked or eaten. It can take the form of leaves, buds, stalks and seeds, as a solid dark lump known as resin or a sticky dark oil. Use can cause nausea, vomiting, paranoia and anxiety and there are also concerns about links to mental illness.

Street name: Marijuana, Draw, Blow, Weed, Puff, Shit, Hash, Ganja, Spliff, Wacky Backy, Skunk



Herbal

Herbal packaged



Cannabis leaf



Cannabis resin blocks (hash)



Chopped cannabis leaf



Grinders



Pipes and bongs used for smoking cannabis



Joints (cannabis) and paraphernalia

## Opiates

### CLASS A

Heroin is found as a brownish-white powder that can be smoked, snorted or dissolved and injected. Methadone is usually found as a green liquid for oral consumption, but also exists in tablet and injectable forms. Opiates are highly addictive and an overdose can lead to coma or death.

Street name: Heroin, Smack, Brown, Horse, Gear, Junk, H, Jack, Scag, Dragon, Tiger, Powder



Heroin in wrap



Heroin injecting paraphernalia



Foil used for smoking heroin



Methadone

## Cocaine & Crack

### CLASS A

Cocaine is usually found as a white powder which is either snorted, or dissolved and injected. Crack is made up of small raisin-sized pieces which are smoked. Both cocaine and crack are addictive and can cause tiredness, chest pain and heart problems.

Street name: Cocaine, Coke, Charlie, Snow, C, Crack (a smokeable form of cocaine), Rock Wash, Stone



Cocaine – in bags and wraps

Cocaine paraphernalia

Weighing scales

Snorters

Street deals of crack with spoon used for making it

Crack pipes

Lighters commonly used for smoking crack

## Ecstasy

### CLASS A

Ecstasy can be found as a white crystalline powder, but normally takes the form of tablets that can vary in size and colour. The tablets are swallowed and can cause overheating and dehydration if taken when dancing energetically. Ecstasy has also been linked to liver and kidney problems.

Street name: E, Doves, XTC, Disco Biscuits, Echoes, Hug Drug, Burgers, Fantasy. Chemical name: MDMA (currently many tablets contain MDEA, MDA, MBDB)



Ecstasy comes in many forms

MDMA crystals

## Amphetamines

### CLASS B

Amphetamines can be found in a variety of forms. As a grey, white or pink powder it can be snorted, swallowed, smoked, injected or dissolved in a drink. It can also be found as a tablet to be swallowed or crystals that are smoked. Use can cause panic attacks, hallucinations, heart strain and mental illness.

Street name: Speed, Whizz, Uppers, Sulph



Found in a variety of colours and textures, also in tablet and capsule form



Amphetamine powder in typical street packaging

## Methamphetamine

### CLASS A

Methamphetamine can be found as crystals for smoking or dissolving for injecting, powder for snorting and also in a tablet form. Use can cause hallucinations, paranoia, delusions, nausea and vomiting. More serious effects include damage to the brain, liver, kidney, lungs and heart, and can ultimately lead to death.

Street name: Methamphetamine Crank, Meth, Ice, Crystal, Tina, Glass, Shabu



Methamphetamine tablets

Bags of methamphetamine

Methamphetamine crystals

## Medicinal, prescribed and other misused drugs

Depending on the substance, these are controlled by the Misuse of Drugs Act, the Medicines Act or other regulations.

These are a selection of medicinal preparations which are often abused. Due to the enormous variety only a small selection are shown here. Any prescribed drug should be kept in a locked cupboard. Positive identification of drug type can only be confirmed by analysis.



Anabolic steroids in different forms



Isopropyl nitrite (Poppers)

Various containers used for transporting GHb or GBL



So called 'legal highs' – including BZP



Pethidine (A)



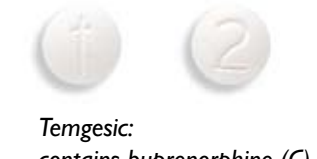
MST: contains morphine



Suboxone



Morphesic



Temgesic: contains buprenorphine (C)



Dihydrocodeine



Diconal: contains dipipanone (A)



Codeine (B)



Rohypnol: contains flunitrazepam



Temazepam (also referred to as normison)



Diazepam (also referred to as valium)



Viagra and copy

## Hallucinogens

### CLASS A

Mushrooms containing psilocybin can be consumed raw, dried and cooked in food or as a tea. LSD usually takes the form of small squares of paper which are swallowed, but can also be very small tablets. Use can result in 'bad trips' which may result in flash-backs to the experience, can lead to mental health problems and cause stomach pains, sickness and diarrhoea.

Street name: LSD, Acid, Trips, Tabs, Blotters, Microdots, Dots, Magic Mushrooms, 'Shrooms, Mushies



LSD tabs and microdots



Magic mushrooms (dried)

## Ketamine

### CLASS C

Ketamine can be found as a white powder to snort, a tablet or as an injectable liquid. Use can cause confusion, disorientation, anxiety, panic attacks, insomnia and can also be linked to mental health problems.

Street name: Special K, Vitamin K, Kitkat, K



Ketamine powder and snorters

## Gases, glues and aerosols

Although possession is not an offence, supplying substances to young people can be

Volatile substances are usually sniffed or inhaled, but gas products are sometimes squirted directly into the mouth. They can cause nausea, vomiting, black-outs and can lead to heart problems resulting in sudden death. There is a risk of suffocation when a plastic bag is used for inhaling gasses or vapours.

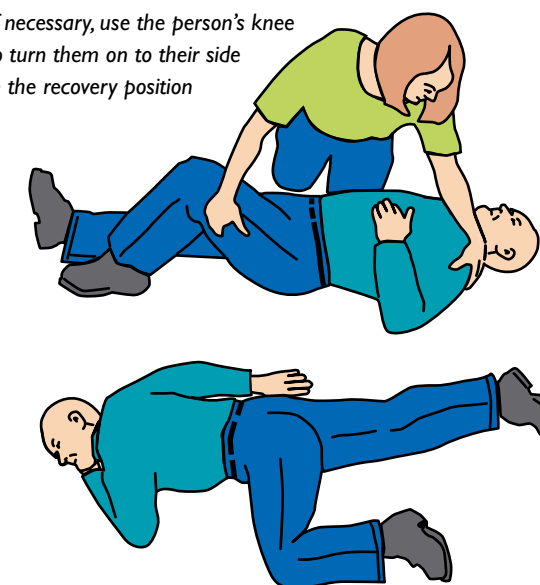


Examples of aerosols, glue, nitrous oxide capsules and 'crackers'

## WHAT TO DO IN AN EMERGENCY

- 1 don't panic
- 2 put them in the recovery position
- 3 dial 999 for an ambulance
- 4 don't leave them alone
- 5 if you have to leave to get help, make sure they can't roll over onto their back
- 6 if possible, tell the ambulance crew what the person has taken

If necessary, use the person's knee to turn them on to their side in the recovery position



**\*Do not hesitate to call 999:**  
Emergency services' main priority is saving lives

## The Law

### MISUSE OF DRUGS ACT 1971

Illegal drugs are divided by the Misuse of Drugs Act 1971 into three classes, A, B and C according to their toxic effect, prevalence of misuse and perceived danger to society.

Detailed below are examples of two categories of offences and the maximum penalties that may be imposed.

### MAXIMUM PENALTIES

	Possession	Supply
Class A	7 years imprisonment and/or a fine	Life imprisonment and/or a fine
Class B	5 years imprisonment and/or a fine	14 years imprisonment and/or a fine
Class C	2 years imprisonment and/or a fine	14 years imprisonment and/or a fine

Possessing or supplying a Class A, B or C drug is an arrestable offence. Passing drugs amongst friends amounts to supplying them.

A Conviction for any Misuse of Drugs Act Offence can affect future employment. Some countries may refuse visas to people with drug convictions.

## Help & information

If you have information on drugs related crime call Crimestoppers anonymously on 0800 555 111. Crimestoppers is an independent charity, it is not part of the police



For drugs information:  
**FRANK**  
0800 77 66 00 talktofrank.com

## Acknowledgements

Drugs and images supplied by TICTAC Communications Ltd apart from cannabis leaf and chopped cannabis, reproduced with the kind permission of The Forensic Science Service.

TICTAC Communications Ltd  
St George's, University of London  
Cranmer Terrace, London SW17 0RE  
Tel: 020 8672 1006 www.tictac.org.uk

We also thank LGC for their support in supplying potential images for this poster.

Poster design and art direction by breast-league.com

This poster is produced by

